

- 1
- 2
- 3
- 4
- 5
- 6
- 7
- 8
- 9
- 10
- 11
- 12
- 13
- 14
- 15
- RH

**MATERIAL**

Polyamide based (PA) technopolymer, black colour, glossy finish.

**WINDOW**

Transparent polyamide based (PA-T/AR) technopolymer.

**PACKING RING**

NBR synthetic rubber.

**STANDARD EXECUTION**

**HGFT.:** with matte anodised aluminium star-shaped contrast screen with red central level point.

**MAXIMUM CONTINUOUS WORKING TEMPERATURE**

212°F (100°C) at 3 bar pressure.

**NOTE**

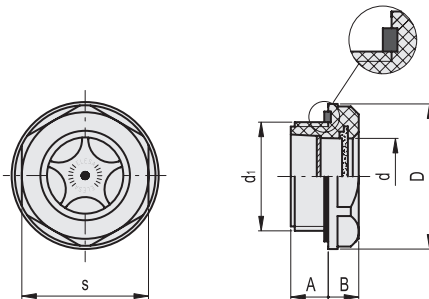
For use with fluids containing special additives, please contact ELESAs Sales Department.

**ACCESSORIES ON REQUEST**

Brass nut type GH. (see page 1372) for fitting to reservoirs with wall thickness smaller than 0.20 (5 mm).



ELESAs Original design



**INCH**

Code	Description	d1	A	B	D	d	s	Tightening torque [ft-lb]	⚠
914461	HGFT.13-1/2 NPT	1/2 NPT	0.39	0.33	1.1	0.57	0.94	4+6	0.01
914481	HGFT.16-3/4 NPT	3/4 NPT	0.37	0.33	1.38	0.71	1.26	6+7	0.02
914521	HGFT.21-1 NPT	1 NPT	0.43	0.37	1.67	0.91	1.5	7+9	0.03